

- 1-FOR GENERAL NOTES SEE SHEET No. 4.
- 2-MATERIAL OF PAD SHALL BE SAME AS PIPE MATERIAL, IT ALSO CAN BE MADE OF PIPE SEGMENT INSTEAD OF PLATE.
- 3-PLATE MATERIAL SHALL BE :ASTM-A283 GR.C
- 4-THE GAP BETWEEN GUIDE & STOP AND STRUCTURE SHALL BE DETERMINED BY STRESS ANALYST.

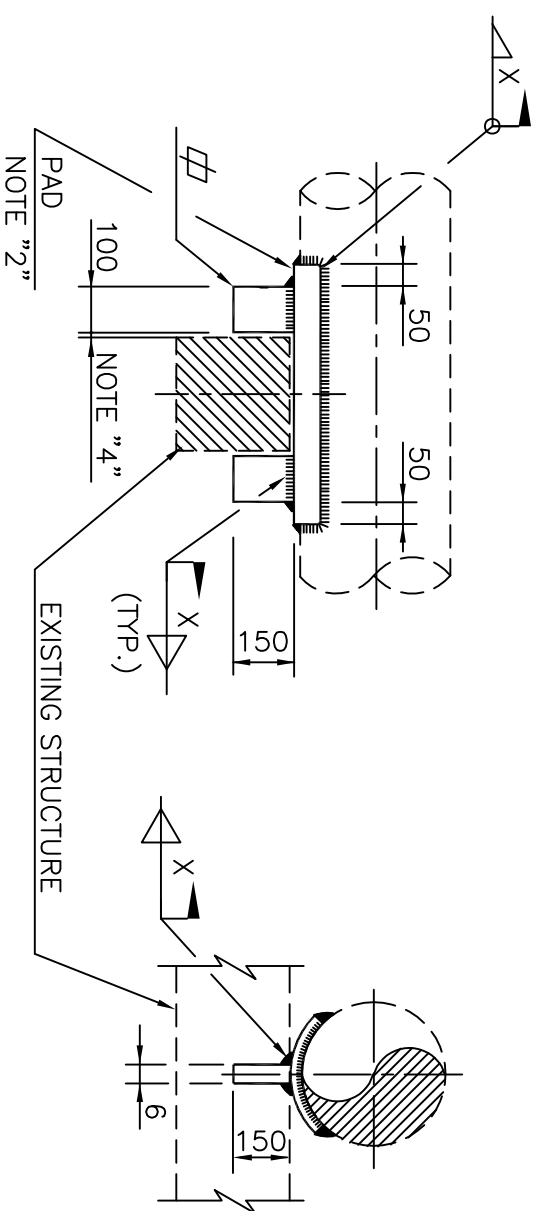
5-FOR FABRICATION DETAILS SEE SHEET No. 27.

SC-05- (1) - (2)

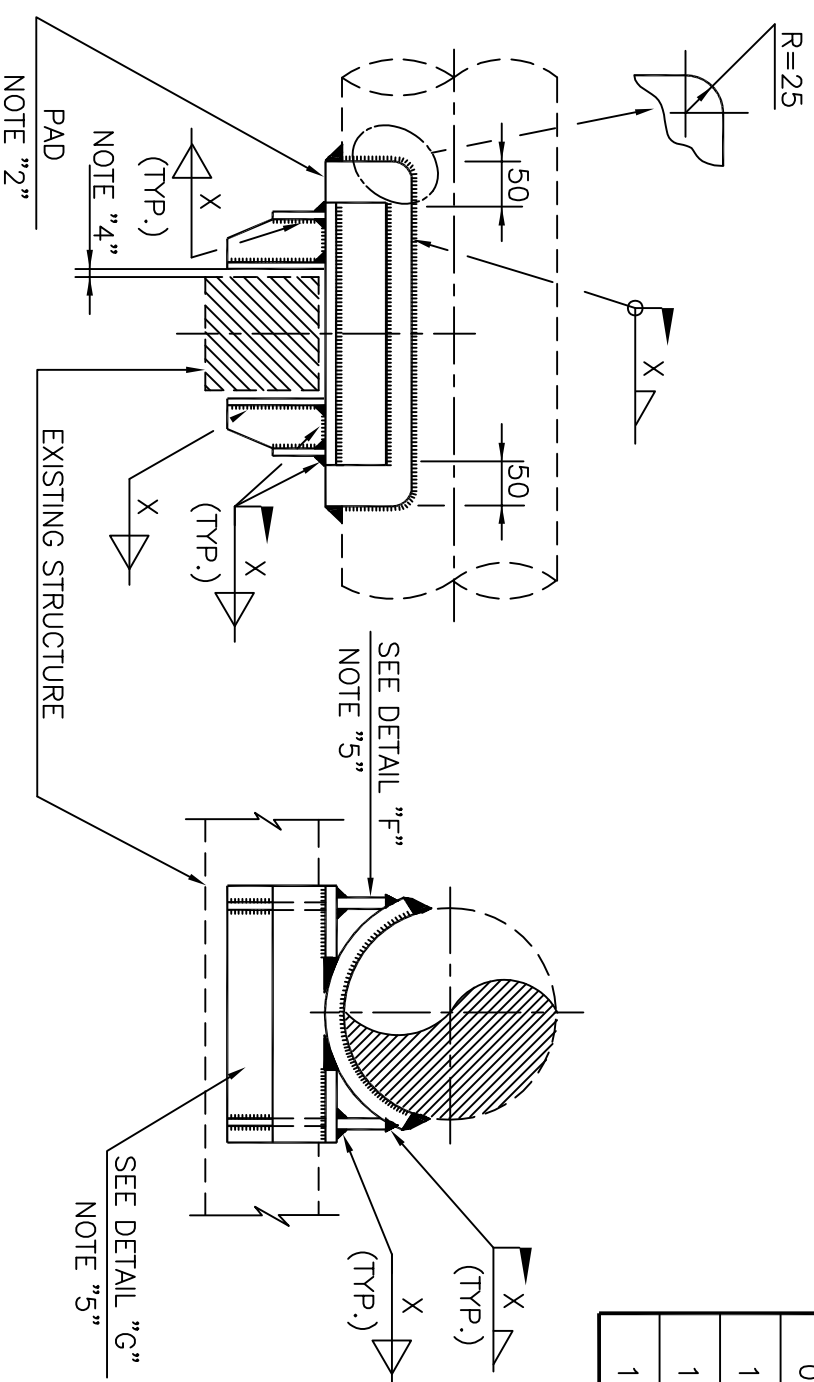
- 1- NPS MARK
- 2- STOPPER LENGTH MARK (SHEET 19)
- 3- STOPPER GAP(mm)

LOAD TABLE

NPS MARK	PIPE SIZE		MAX. AXIAL LOAD (Kg)
	NPS	DN	
01	1/2"~1 1/2"	15 ~ 40	150
02	2"	50	500
03	3"	80	
04	4"	100	
06	6"	150	2000
08	8"	200	5000
10	10"	250	6000
12	12"~16"	300 ~ 400	
18	18"~24"	450 ~ 640	



1/2"(DN15)~3"(DN 80)



4"(DN100)~24"(DN600)

INTERNAL PROCEDURE

DRAWING TITLE:

STANDARD FOR PIPE SUPPORT DRAWING

Contract No.	Document No.	Class	Rev.	Size	Scale	Sheet No.